

## **Pneumocystis carinii: inhibition of lung cell growth mediated by parasite attachment.**

A H Limper, W J Martin 2nd

*J Clin Invest.* 1990;**85**(2):391-396. <https://doi.org/10.1172/JCI114451>.

### Research Article

*Pneumocystis carinii* pneumonia is a significant cause of mortality in immunocompromised patients. Current concepts suggest that attachment of *P. carinii* to alveolar epithelium is required for development of pneumonia. We examined the mechanism of *P. carinii* adherence to cultured A549 cells, a permanent cell line derived from human alveolar epithelium. *P. carinii* adherence was quantified by measuring attachment of <sup>51</sup>Cr-labeled *P. carinii* to cultured A549 cells. After 8 h of incubation, 37.4 ± 4.2% of *P. carinii* were adherent to A549 cells. In the presence of agents known to impair cytoskeletal function, including 10<sup>-5</sup> M cytochalasin B, 10<sup>-5</sup> M colchicine, and 10<sup>-5</sup> M trimethylcolchicinic acid (TMCA), adherence was decreased from 57.4 ± 4.2% to 9.3 ± 3.4%, 12.5 ± 3.6%, and 21.5 ± 3.6%, respectively (P less than 0.01, all comparisons). Secondly, we examined the effect of *P. carinii* on the function of A549 cells. *P. carinii* resulted in significant impairment of A549 cell growth, indicating *P. carinii* adversely affected the function of target lung cells. A *P. carinii*:A549 cell ratio of 50:1 resulted in 43.5 ± 2.9% inhibition of A549 cell growth (P less than 0.001). Additionally, TMCA, which significantly prevented attachment of *P. carinii*, reversed the impairment of A549 cell growth. These data demonstrate that *P. carinii* attachment to cultured lung cells can be quantified, is dependent on [...]

**Find the latest version:**

<https://jci.me/114451/pdf>



# ***Pneumocystis carinii*: Inhibition of Lung Cell Growth Mediated by Parasite Attachment**

A. H. Limper and W. J. Martin II

Division of Thoracic Diseases, Department of Internal Medicine, Mayo Clinic, Rochester, Minnesota 55905

## **Abstract**

*Pneumocystis carinii* pneumonia is a significant cause of mortality in immunocompromised patients. Current concepts suggest that attachment of *P. carinii* to alveolar epithelium is required for development of pneumonia. We examined the mechanism of *P. carinii* adherence to cultured A549 cells, a permanent cell line derived from human alveolar epithelium. *P. carinii* adherence was quantified by measuring attachment of <sup>51</sup>Cr-labeled *P. carinii* to cultured A549 cells. After 8 h of incubation, 37.4±4.2% of *P. carinii* were adherent to A549 cells. In the presence of agents known to impair cytoskeletal function, including 10<sup>-5</sup> M cytochalasin B, 10<sup>-5</sup> M colchicine, and 10<sup>-5</sup> M trimethylcolchicinic acid (TMCA), adherence was decreased from 57.4±4.2% to 9.3±3.4%, 12.5±3.6%, and 21.5±3.6%, respectively (*P* < 0.01, all comparisons). Secondly, we examined the effect of *P. carinii* on the function of A549 cells. *P. carinii* resulted in significant impairment of A549 cell growth, indicating *P. carinii* adversely affected the function of target lung cells. A *P. carinii*:A549 cell ratio of 50:1 resulted in 43.5±2.9% inhibition of A549 cell growth (*P* < 0.001). Additionally, TMCA, which significantly prevented attachment of *P. carinii*, reversed the impairment of A549 cell growth. These data demonstrate that *P. carinii* attachment to cultured lung cells can be quantified, is dependent on intact cytoskeletal function and is necessary for impairment of lung cell replication. (*J. Clin. Invest.* 1990. 85:391–396.) *Pneumocystis carinii* • pneumonia • parasite adherence • cytochalasin B • colchicine

## **Introduction**

*Pneumocystis carinii* pneumonia is a frequent life-threatening complication of immune deficiency. Current concepts suggest growth of *P. carinii* organisms requires attachment of *P. carinii* trophozoites to the alveolar epithelial cells of the lung (1–7). *P. carinii* organisms appear to preferentially attach to type I alveolar epithelial cells, although small numbers may attach to the surface of type II alveolar epithelial cells (1, 4–7). There is no evidence to suggest that *P. carinii* enters the epithelial cell or has an intracellular phase in its life cycle; rather, the organisms remain on the surface of the cell. The mechanism of *P. carinii* attachment and how the lung cell is affected by this attachment is poorly understood.

Address reprint requests to Dr. Martin, Indiana University Medical Center, 1001 West Tenth Street, West Outpatient Building, Room 425, Indianapolis, IN 46202.

Received for publication 16 March 1989 and in revised form 18 August 1989.

*J. Clin. Invest.*

© The American Society for Clinical Investigation, Inc.

0021-9738/90/02/0391/06 \$2.00

Volume 85, February 1990, 391–396

Ultrastructural studies have provided important descriptive information regarding the attachment of *P. carinii* to alveolar epithelial cells (1–7). Although earlier reports suggested that *P. carinii* use specialized “filopodia” as organelles of attachment (8, 9), more recent studies suggest *P. carinii* attachment is not mediated by specialized structures (3–5); rather, attachment occurs as a result of close apposition (not fusion) of the cell membranes of *P. carinii* to the alveolar epithelial cell (3–6).

The study of *P. carinii* attachment to lung cells has been limited by the absence of an appropriate model that permits quantification of attachment and isolation of variables thought to be important in the attachment process. Our study includes the development of a novel method to quantify *P. carinii* attachment and suggests that *P. carinii* requires intact cytoskeletal function to adhere to target lung cells. Furthermore, *P. carinii* appears to adversely affect target cell function by impairing lung cell replication. This *P. carinii*-mediated impairment of lung cell growth requires attachment of the organism to the target cell surface since agents that prevent attachment also reverse this adverse effect on the target cell population.

## **Methods**

*P. carinii* isolation and purification. *P. carinii* pneumonia was induced in Harlan Sprague-Dawley rats by immunosuppression with dexamethasone as previously described by Hughes and co-workers (10). Female Harlan Sprague Dawley rats (250 g; Harlan Sprague Dawley, Inc., Indianapolis, IN) were housed in open cages in a clean but not sterile environment. Drinking water containing a mixture of dexamethasone (2 mg/liter), tetracycline hydrochloride (500 mg/liter), and nystatin (200,000 U/liter) was provided ad lib. Rats were maintained on a diet containing 8% protein in order to intensify the severity of *P. carinii* disease (Teklad Corp., Madison, WI) (11).

After 8 wk of treatment, rats exhibited evidence of respiratory distress, wasting, and hair loss, and were killed by lethal injection with 26% pentobarbital intraperitoneally. After aseptically opening the thorax, rats were exsanguinated and the lungs perfused with HBSS, without calcium or magnesium, containing 0.6 mM EDTA, penicillin (100 µg/ml), gentamicin (4 µg/ml), and amphotericin B (0.5 µg/ml). Whole lung lavage was performed with sequential 10-ml aliquots of HBSS with immediate return of up to 50 ml of instilled fluid.

*P. carinii* organisms were isolated and purified by differential centrifugation adapted from the method described by Masur (12). Pooled lavage fluid (typically 45 ml) was centrifuged (800 g × 10 min) and *P. carinii* cysts were identified in the inflammatory cell pellets using a modified Grocott methenamine silver stain (13). The turbid supernatants containing predominantly *P. carinii* organisms were centrifuged (1,400 g × 30 min), the pellets resuspended in 1 ml of HBSS, and *P. carinii* organisms were quantified by the method of Bartlett et al. (14). Duplicate 10-µl aliquots of this suspension were directly spotted onto glass slides, air dried, and stained with Diff-Quik (Harleco, Dade Diagnostics, Aquada, Puerto Rico). Each drop occupied ~ 1 cm<sup>2</sup> on the slide, and the number of *P. carinii* trophozoites in 10 oil immersion fields was determined from each spot. The total number of *P. carinii* was calculated using the formula: *P. carinii*/ml = (*P. carinii*/field)

× (No. of fields/drop) × (10<sup>2</sup>). Using the above method, average yield was (9.01±0.41) × 10<sup>6</sup> purified *P. carinii* organisms from each rat lavaged. Further, *P. carinii* organisms represented 96.5±0.5% of the cellular differential, with the remainder representing mostly nonviable inflammatory cells. Occasional rats had evidence of significant bacterial contamination noted on smears of the lavage, and these were discarded. Despite occasional evidence of other microorganisms on smears of the lavages, microbiologic evaluation of selected rat lavage isolates failed to culture any known pathogenic bacteria, fungi, or virus.

***P. carinii* adherence assays.** Freshly isolated *P. carinii* (24 × 10<sup>6</sup> organisms) were incubated for 18 h in 1 ml of Dulbecco's modified Eagle's medium (Whittaker M. A. Bioproducts, Walkersville, MD) containing 20% heat-inactivated fetal calf serum, penicillin (10 µg/ml), gentamicin (4 µg/ml), amphotericin (0.5 µg/ml) and 50 µCi <sup>51</sup>Cr/ml (679 mCi/mg, New England Nuclear, Boston, MA). This suspension was washed four times with medium to remove unincorporated <sup>51</sup>Cr and adjusted to a concentration of 2.0 × 10<sup>6</sup> *P. carinii* per ml. Two million <sup>51</sup>Cr-labeled *P. carinii* were incubated with confluent monolayers of A549 cells (American Type Culture Collection, Rockville, MD) grown in 24-well plates using DME containing 10% heat-inactivated fetal calf serum and penicillin, gentamicin and amphotericin as noted above. After centrifugation onto the monolayers (1,400 g × 5 min), <sup>51</sup>Cr-labeled *P. carinii* organisms were incubated with the A549 cell monolayers for 0, 2, 4, and 8 h. After incubation, media were removed and A549 cells washed three times with HBSS to remove any unattached <sup>51</sup>Cr-labeled *P. carinii* organisms. Adherence of *P. carinii* was defined as follows: % adherence = (A/A + B) × 100%, where A = dpm of <sup>51</sup>Cr associated with the A549 cell monolayer and B = dpm of <sup>51</sup>Cr-labeled *P. carinii* not adherent to the cellular monolayer.

To provide morphologic confirmation of *P. carinii* adherence to cultured A549 cells, 2 × 10<sup>6</sup> *P. carinii* were incubated with confluent monolayers of A549 cells grown on sterile plastic coverslips (Thermanox Tissue Culture Slips; Miles Laboratories, Inc., Naperville, IL) as described above. After incubating, the coverslips were removed, washed with HBSS and fixed in Trump's fixative containing 1% glutaraldehyde and 4% formaldehyde in 0.1 M NaPO<sub>4</sub> buffer at pH = 7.20 for 2 h. Scanning electron microscopy (SEM) was performed using an ETEC Autoscan microscope (Perkin-Elmer, Norwalk, CT).

To assess the importance of parasite cytoskeletal function on adherence, additional assays were conducted in the presence and absence of 10<sup>-6</sup>-10<sup>-5</sup> M concentrations of cytochalasin B (Sigma Chemical Co., St. Louis, MO), colchicine (Eli Lilly Co., Indianapolis, IN), or trimethylcolchicinic acid (TMCA)<sup>1</sup> (Sigma Chemical Co.) for 8 h, and the % adherence of <sup>51</sup>Cr-labeled *P. carinii* was determined as noted above.

To verify that cytochalasin B, colchicine, and TMCA did not adversely affect *P. carinii* viability, <sup>51</sup>Cr release (measure of cytotoxicity) and [<sup>3</sup>H]leucine incorporation (measure of protein synthesis) were measured. The percent release of <sup>51</sup>Cr (%R) from labeled *P. carinii* during 8 h of incubation in the presence and absence of 10<sup>-5</sup> M cytochalasin B, colchicine, or TMCA was determined as follows: %R = (A/A + B) × 100% where A = dpm of <sup>51</sup>Cr released into the medium and B = dpm of <sup>51</sup>Cr associated with *P. carinii*. To determine the effect of these agents on protein synthesis, 2 × 10<sup>6</sup> *P. carinii* organisms were incubated with [<sup>3</sup>H]leucine (75 µCi/ml) (140 Ci/mmol, New England Nuclear) for 8 h in the presence and absence of 1 × 10<sup>-5</sup> cytochalasin B, colchicine, or TMCA. After incubation, the *P. carinii* were washed free of medium and sonicated. The sonicate was precipitated in ice-cold 10% trichloroacetic acid and the precipitable protein measured by scintillation counting.

**A549 cell growth assay.** The effect of *P. carinii* on the function of the A549 cells was measured by monitoring A549 cell replication. A549 lung cells were cultured in DME containing 10% heat-inacti-

vated fetal calf serum, penicillin, gentamicin, and amphotericin B as noted previously. Confluent monolayers of A549 cells were grown in 25 cm<sup>2</sup> tissue culture flasks (Corning Glass Works, Parkridge, IL), removed by brief treatment with Trypsin Versene (1×) (Biofluids, Rockville, MD), and replated in fresh medium at a density of 30,000 cells per well in 6-well tissue culture plates (Nunc, Inc., Naperville, IL). After attachment of A549 cells to tissue culture plates (4 h), medium was replaced with fresh medium containing appropriate numbers of *P. carinii* organisms. Wells containing A549 cells without *P. carinii* organisms served as controls. After 72 h, the medium was removed and monolayers were washed thoroughly with three aliquots of HBSS. The A549 target cells were completely removed with Trypsin Versene (1×) and were enumerated by Coulter counter analysis (model ZF; Coulter Electronics, Inc., Hialeah, FL).

Impairment of target cell growth was expressed as a growth impairment (GI) index, as previously described (15), where 100% represents total inhibition of growth and 0% represents normal growth of A549 cells. The following formula was employed: GI Index = [(A - B)/A] × 100%, where A = A549 cell count in control wells, and B = A549 cell count in wells containing *P. carinii*.

**Assessment of culture medium.** To determine whether *P. carinii* consume excess media nutrients or release soluble growth inhibiting substances into the culture media, media incubated with A549 cells with or without *P. carinii* was assayed to determine its effect on further A549 cell growth. Media removed from A549 cell growth assays were filter sterilized using 0.45 µm disk filters (Acrodisc; Gelman Sciences, Ann Arbor, MI) to remove *P. carinii* organisms, added to 6-well culture plates containing newly seeded A549 cells (30,000 cell/well) and incubated for 72 h. A549 cells were then removed from the culture dishes and the GI indices determined as noted above.

**Statistical methods.** Data are expressed as mean±SEM. Differences between experimental and control data groups were assessed using Student's two-sample *t* test for two-sided alternatives in which *P* < 0.05 was defined as a statistically significant result.

## Results

***P. carinii* adherence assays.** *P. carinii* adherence to monolayer A549 cells was quantified using <sup>51</sup>Cr-labeled *P. carinii*. Incubation of <sup>51</sup>Cr-labeled *P. carinii* with A549 target cells for 2, 4, and 8 h (Fig. 1) resulted in 13.0±1.4%, 40.6±4.6%, and 37.4±4.2% adherence, respectively, (*P* < 0.001, latter two comparisons to control at 0 h). Ultrastructural examination by SEM revealed *P. carinii* organisms to be adherent to the A549 cell monolayer with *P. carinii* typically attaching in clusters to one in every four or five monolayer cells (Fig. 2). When <sup>51</sup>Cr counts were detectable, adherent *P. carinii* were present; similarly, when no <sup>51</sup>Cr counts were detectable, no *P. carinii* organisms were visible by SEM. Thus, adherence of *P. carinii* to cultured A549 cells could be quantified using <sup>51</sup>Cr-labeled organisms and occurred in a time-dependent fashion and appeared to reach a maximum between 4 and 8 h.

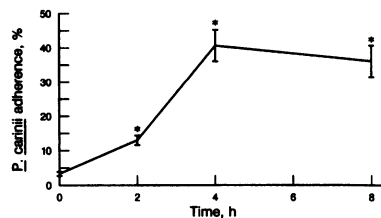
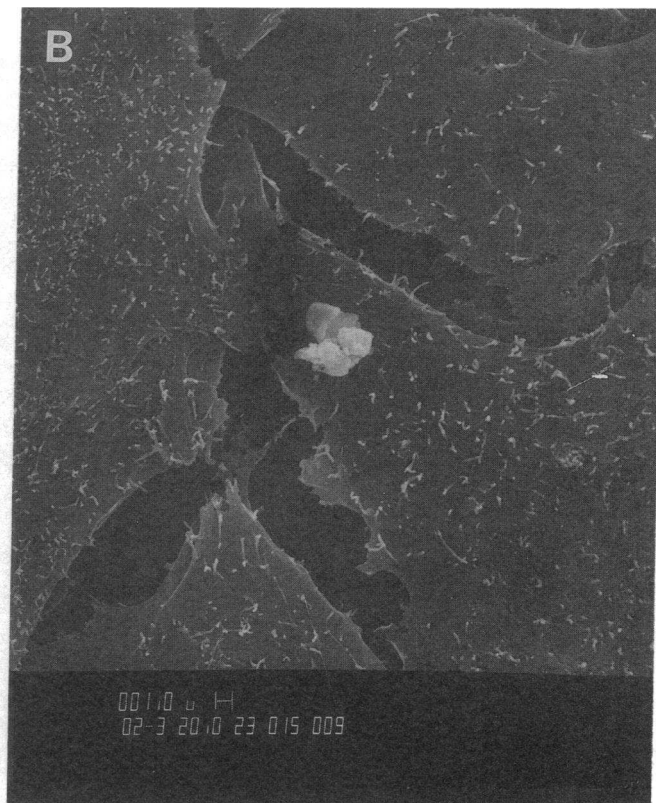


Figure 1. Time course of *P. carinii* adherence to A549 cells. The <sup>51</sup>Cr-labeled *P. carinii* were incubated with A549 cell monolayers for 0, 2, 4, and 8 h. Data are expressed as percent adherence of *P. carinii* to

A549 cell monolayers. \*Denotes comparisons which were significantly different from controls (*P* < 0.05). Each data point represents six determinations and are expressed as mean±SEM.

1. Abbreviations used in this paper: GI, growth impairment; TMCA, trimethylcolchicine.



**Figure 2.** Ultrastructural studies of *P. carinii* attachment to A549 cells in monolayer culture. (A) Scanning electron micrograph revealing A549 cells in monolayer culture with typical microvilli present on cell surface ( $\times 2,000$ ). (B) Cluster of *P. carinii* trophozoites adherent to A549 cells with attachment typically occurring on one in every four or five monolayer cells ( $\times 2,000$ ). (C) High power view revealing typical morphology of trophozoite organisms ( $\times 7,000$ ).

**Role of cytoskeletal components in adhesion.** To determine the need for intact cytoskeleton function in the adherence of *P. carinii* to target cells, assays were conducted in the presence and absence of the antimotility agents cytochalasin B, colchicine, or the colchicine derivative, TMCA (Fig. 3). The adher-

ence of *P. carinii* to the A549 cell layer was reduced from a control value of  $37.4 \pm 4.2\%$  to  $9.3 \pm 3.4\%$  ( $10^{-5}$  M cytochalasin B),  $12.5 \pm 3.6\%$  ( $10^{-5}$  M colchicine), and  $21.5 \pm 3.6\%$  ( $10^{-5}$  M TMCA) ( $P < 0.01$ , all comparisons). Further adherence assays were conducted using *P. carinii* or A549 cells with only a 1-h

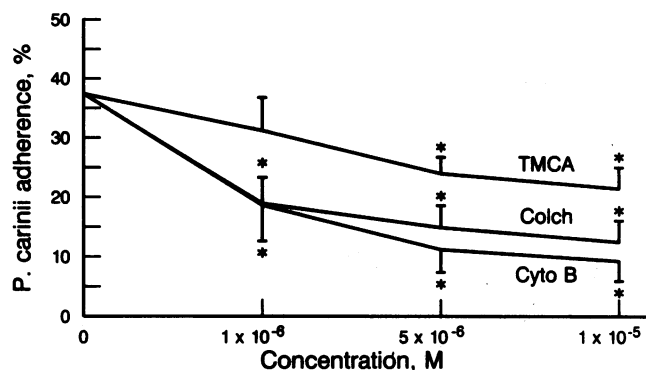


Figure 3. Reduction of *P. carinii* adherence to A549 lung cells by agents that impair cytoskeletal function. The <sup>51</sup>Cr-labeled *P. carinii* were incubated with A549 cell monolayers for 8 h. Data are expressed as percent adherence of *P. carinii* to A549 cells at 8 h. *P. carinii* containing media were treated with increasing concentrations of trimethylcolchicinic acid (TMCA), colchicine (colch), and cytochalasin B (cyto B). \*Comparisons that are significantly different from controls ( $P < 0.05$ ). Each data point represents six determinations and is expressed as mean  $\pm$  SEM.

preincubation of the cells with the antimotility agents at the same concentrations, followed by washing and incubating in the absence of the agents. Preincubation of the antimotility agents with either cell population failed to change adherence (data not shown), consistent with other studies which indicate the effects of these antimotility agents are "reversible" (16–18). Thus, agents that impair cytoskeletal function significantly reduced the adherence of the *P. carinii* organisms to A549 lung cells when present during the attachment process.

Additionally, the highest concentration of cytochalasin B, colchicine, and TMCA used ( $10^{-5}$  M), did not result in significantly greater release of <sup>51</sup>Cr from treated *P. carinii* compared with control organisms (control =  $29.1 \pm 4.3\%$ ; cytochalasin B =  $32.5 \pm 5.0\%$ ; colchicine =  $31.5 \pm 3.5\%$ ; TMCA =  $30.0 \pm 3.5\%$ ;  $P > 0.10$  all comparisons to control). Further, the incorporation of [<sup>3</sup>H]leucine into trichloroacetic acid precipitable protein by *P. carinii* organisms was not significantly altered in the presence of the drugs (control =  $2,320 \pm 313$  dpm; cytochalasin B =  $2,091 \pm 381$  dpm; colchicine =  $2,627 \pm 642$  dpm; TMCA  $2,174 \pm 150$ ;  $P > 0.10$  all comparisons to control). Thus, agents that impair cytoskeletal function of *P. carinii* organisms and impair adherence of the organism to A549 cells do not interfere with the apparent viability or functional status of *P. carinii* organisms.

**A549 target cell growth assay.** Increasing concentrations of *P. carinii* organisms resulted in significant impairment of A549 cell growth as expressed by a dramatic increase in the GI index (Fig. 4). A *P. carinii*:A549 cell ratio of 1:10 resulted in a GI index of only  $4.4 \pm 3.4\%$  growth inhibition; whereas, at a ratio of 25:1, the GI index increased to  $34.9 \pm 6.5\%$  ( $P < 0.005$ ); and at 50:1, increased to  $43.5 \pm 2.9\%$  ( $P < 0.001$ ). No cytopathic effects were detectable in the target A549 cell population. Thus, the higher the number of *P. carinii* organisms the greater the impairment of A549 cell growth, indicating for the first time that *P. carinii* may seriously affect the normal function of target lung cell populations.

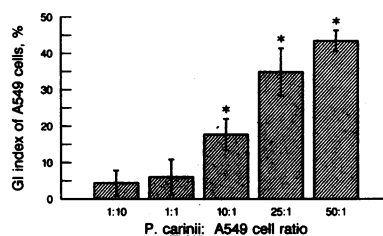


Figure 4. *P. carinii*-mediated impairment of A549 cell growth. A549 cell growth was quantified in the presence of increasing concentrations of *P. carinii* during a 72-h incubation. Data are expressed as a

growth impairment index (GI index) where GI index of 0% represents normal A549 cell growth (control) and GI index of 100% indicates complete inhibition of A549 cell growth. \*Comparisons that were significantly different from control ( $P < 0.05$ ). Each data point represents six determinations and are expressed as mean  $\pm$  SEM.

Additionally, heat inactivation of *P. carinii* substantially reduced the growth-inhibiting properties of *P. carinii* on A549 cells. After heat inactivation ( $56^\circ\text{C} \times 1$  h), heat killed *P. carinii* resulted in a growth inhibition of only  $8.2 \pm 3.5\%$  compared to  $33.2 \pm 15.5\%$  growth inhibition from control *P. carinii* ( $P < 0.05$ ), indicating that viable *P. carinii* are necessary for significant growth inhibition.

**Effect of *P. carinii* treated culture media on A549 cell growth.** Culture media incubated with A549 cells in the presence and absence of *P. carinii* was filter-sterilized to remove *P. carinii* organisms, and assayed to determine if *P. carinii* conditioned medium would impair A549 cell growth. Filter-sterilized media from incubations with A549 cells alone (controls) resulted in a GI index of  $8.1 \pm 6.8\%$ ; similarly, filter sterilized media from incubations with A549 cells and *P. carinii* organisms resulted in a GI index of  $6.4 \pm 4.9\%$  ( $P = 0.8$ ). Thus, there was no evidence of *P. carinii*-conditioned media adversely affecting A549 cell growth compared to control media. This suggests that *P. carinii* organisms do not impair A549 cell replication by consuming excess essential nutrients or releasing growth inhibiting toxins into the medium.

**Role of adherence in growth impairment.** To determine whether adherence of *P. carinii* is necessary for *P. carinii* to impair growth of A549 lung cells, the A549 cell growth assay was repeated with *P. carinii* in the presence and in the absence of TMCA (Fig. 5). TMCA was used because, unlike cytochalasin B and colchicine, it does not inhibit the growth of cultured cells (19). TMCA ( $10^{-5}$  M) reversed the effect of *P. carinii* on A549 cell growth with a reduction in the GI index from  $56.2 \pm 2.9\%$  (PC alone) to a GI index of  $10.2 \pm 3.1\%$  (PC with

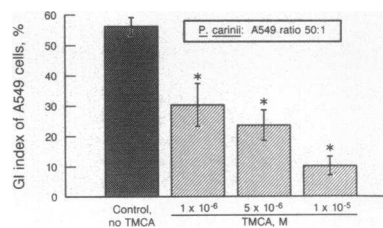


Figure 5. Reduction of *P. carinii*-induced impairment of A549 cell growth by trimethylcolchicinic acid (TMCA). A549 cell growth was quantified in the presence of *P. carinii* treated with increasing

concentrations of TMCA during a 72-h incubation. Data are expressed as a growth impairment index (GI index). \*Denotes comparisons that were significantly different from controls (no TMCA) ( $P < 0.05$ ). Each data point represents six determinations and is expressed as mean  $\pm$  SEM.

TMCA) ( $P < 0.001$ ). Additionally, TMCA by itself had no adverse effect on the growth of A549 cells (data not shown). Thus, agents such as TMCA, which reduced the adherence of *P. carinii* to A549 lung cells, reversed the *P. carinii*-mediated impairment of A549 cell growth.

## Discussion

*P. carinii* attachment to alveolar epithelial cells is critical to the development of *P. carinii* pneumonia (1–7). Attachment of microorganisms to host epithelial cells is necessary for the establishment of a variety of respiratory and nonrespiratory infections (20–24). Using a novel in vitro assay, *P. carinii* attachment to A549 lung cell monolayers can be quantified in a time-dependent fashion with maximal adherence occurring between 4 and 8 h of incubation.

Ultrastructural studies suggest that *P. carinii* adherence requires apposition and interdigitation of parasite cell membranes with those of alveolar epithelial cells (5, 7). The cytoskeleton of *P. carinii* is undoubtedly essential to the process of adherence. Recent ultrastructural studies by Itatani and Marshall demonstrate the presence of filamentous and microtubular structures extending into the pseudopodia of *P. carinii* trophozoites (7). Our studies indicate that agents that impair cytoskeletal function such as cytochalasin B, colchicine, and TMCA significantly reduce *P. carinii* adherence to target lung cells; however, these agents may reduce adherence of *P. carinii* by impairing cytoskeletal function in either the *P. carinii* or target cell populations. Since cytochalasin B inhibits actin filament polymerization and colchicine impairs cytoskeletal function by binding to tubulin (25–28), it is likely that *P. carinii* adheres to alveolar epithelial cells by mechanisms dependent on the functional integrity of both actin filaments and microtubule components.

Additionally, *P. carinii* adherence to alveolar epithelial cells adversely affects the normal functioning of lung cells. Ultrastructural studies of *P. carinii* pneumonia demonstrate vacuolization and degeneration of alveolar epithelial cells during *P. carinii* infection (1, 4). Our investigation further documents the ability of *P. carinii* to impair lung cell function by interfering with lung cell replication. If *P. carinii* attachment to alveolar epithelial cells in vivo inhibits cell division, this may significantly impair the normal repair mechanisms operative in the lung during *P. carinii* pneumonia.

Furthermore, our study suggests that the *P. carinii* mediated impairment of lung cell growth requires adherence of *P. carinii* to target cells. TMCA, an agent that does not impair cell division (19), significantly reduced *P. carinii* adherence to lung cells and reversed the effect of *P. carinii* on lung cell growth. It is possible such agents may have therapeutic potential in *P. carinii* pneumonia by directly reversing the toxic effect of *P. carinii* organisms on alveolar epithelial cells. Additionally, by interfering with the normal parasite life-cycle, these agents may also prevent the further growth of *P. carinii* organisms. Clearly, substantial additional testing would be required before any therapeutic application of this experimental data in human subjects.

Although *P. carinii* attachment to target cells is required, the mechanism of *P. carinii*-mediated impairment of cell growth is unknown. *P. carinii*-conditioned medium fails to confer growth impairment of cultured lung cells suggesting

that the parasites do not consume excess essential nutrients nor release stable growth impairing products into the culture medium. Further study of this *P. carinii*-mediated toxicity may provide important insights into the host-parasite interaction and improve our understanding of mechanisms operative in the disease process.

## Acknowledgments

This work was supported by National Institutes of Health grant HL/AI 43524.

## References

1. Lanken, P. N., M. Minda, G. G. Pietra, and A. P. Fishman. 1980. Alveolar response to experimental *Pneumocystis carinii* pneumonia in the rat. *Am. J. Pathol.* 99:561–578.
2. Murphy, M. J., L. L. Pifer, and W. T. Hughes. 1977. *Pneumocystis carinii* in vitro: a study by scanning electron microscopy. *Am. J. Pathol.* 86:387–394.
3. Yoneda, K., and P. D. Walzer. 1983. Attachment of *Pneumocystis carinii* to type I alveolar epithelial cells by freeze-fracture electron microscopy. *Infect. Immun.* 40:812–815.
4. Henshaw, N. G., J. L. Carson, and A. M. Collier. 1985. Ultrastructural observation of *Pneumocystis carinii* attachment to rat lung. *J. Infect. Dis.* 151:181–186.
5. Long, E. G., J. S. Smith, and J. L. Meier. 1986. Attachment of *Pneumocystis carinii* to rat pneumocytes. *Lab. Invest.* 54:609–615.
6. Walzer, P. D. 1986. Attachment of microbes to host cells: relevance of *Pneumocystis carinii*. *Lab. Invest.* 54:589–592.
7. Itatani, C. A., and J. Marshall. 1988. Ultrastructural morphology and staining characteristics of *Pneumocystis carinii* in situ and from bronchoalveolar lavage. *J. Parasitol.* 74:700–712.
8. Hamm, E. K., S. D. Greensburg, R. C. Reynolds, and D. B. Singer. 1971. Ultrastructure of *Pneumocystis carinii*. *Exp. Mol. Pathol.* 14:362–372.
9. Vavra, J., and K. Kucera. 1970. *Pneumocystis carinii* Delanoë, its ultrastructure and ultrastructural affinities. *J. Protozool.* 17:463–483.
10. Hughes, W. T., P. C. McNabb, T. D. Makres, and S. Feldman. 1974. Efficacy of trimethoprim and sulfamethoxazole in the prevention and treatment of *Pneumocystis carinii* pneumonitis. *Antimicrobiol. Agents Chemother.* 5:289–293.
11. Walzer, P. D., M. LaBine, and T. J. Redington. 1984. Predisposing factors in *Pneumocystis carinii* pneumonia: effects of tetracycline, protein malnutrition, and corticosteroids on hosts. *Infect. Immun.* 46:747–753.
12. Masur, H. 1984. Interactions between *Pneumocystis carinii* and phagocytic cells. In *Pneumocystis carinii* Pneumonia. L. S. Young, editor. Marcel Dekker, New York. 77–95.
13. Mahan, C. T., and G. E. Sale. 1978. Rapid methenamine silver stain for *Pneumocystis* and fungi. *Arch. Pathol. Lab. Med.* 102:351–352.
14. Bartlett, M. S., P. A. Vervanac, and J. W. Smith. 1979. Cultivation of *Pneumocystis carinii* with WI-38 cells. *J. Clin. Microbiol.* 10:796–799.
15. Martin, W. J., II, and D. L. Kachel. 1989. Oxygen mediated impairment of human endothelial cell growth. Evidence for a specific threshold of toxicity. *J. Lab. Clin. Med.* 113:413–421.
16. Tilney, L. G. 1968. Studies on the microtubules in heliozoa. *J. Cell. Sci.* 3:549–562.
17. Yamada, K. M., B. S. Spooner, and N. K. Wessells. 1970. Axon growth: roles of microfilaments and microtubules. *Proc. Nat. Acad. Sci. USA.* 66:1206–1212.

18. Goldman, R. D. 1972. The effects of cytochalasin B on the microfilaments of baby hamster kidney (BHK-21) cells. *J. Cell. Biol.* 52:246-254.
19. Wallace, S. L. 1975. Colchicine and new antiinflammatory drugs for the treatment of acute gout. *Arthritis Rheum.* 18:847-851.
20. Higuchi, J. H., and W. G. Johanson. 1980. The relationship between adherence of *Pseudomonas aeruginosa* to upper respiratory cells *in vitro* and susceptibility to colonization *in vivo*. *J. Lab. Clin. Med.* 95(5):698-705.
21. Niederman, M. S., W. W. Merrill, R. D. Ferranti, K. M. Pagano, L. B. Palmer, and H. Y. Reynolds. 1984. Nutritional status and bacterial binding in the respiratory tract in patients with chronic tracheostomy. *Ann. Intern. Med.* 100:798-800.
22. Niederman, M. S., R. D. Ferranti, A. Zeigler, W. W. Merrill, and H. Y. Reynolds. 1984. Respiratory infection complicating long-term tracheostomy: the implication of persistent gram-negative tracheobronchial colonization. *Chest.* 85(1):39-44.
23. Johanson, W. G., J. H. Higuchi, T. R. Chandhuri, and D. E. Woods. 1980. Bacterial adherence to epithelial cells in bacillary colonization of the respiratory tract. *Am. Rev. Respir. Dis.* 121:55-63.
24. Schaeffer, A. J., J. M. Jones, and D. K. Dunn. 1981. Association of *in vitro* *Escherichia coli* adherence to vaginal and buccal epithelial cells with susceptibility of women to recurrent urinary tract infections. *N. Engl. J. Med.* 304:1062-1066.
25. Malech, H. L., R. K. Root, and J. I. Gallin. 1977. Structural analysis of human neutrophil migration. *J. Cell Biol.* 75:666-693.
26. Zakhire, B., and H. L. Malech. 1980. The effect of colchicine and vinblastine on the chemotactic response of human monocytes. *J. Immunol.* 125:2143-2153.
27. Valberg, P. A., J. D. Brain, and D. Kane. 1981. Effects of colchicine or cytochalasin B on pulmonary macrophage endocytosis *in vivo*. *J. Appl. Physiol.* 50:621-629.
28. Davies, P., and A. C. Allison. 1978. Effects of cytochalasin B on endocytosis and exocytosis. In *Cytochalasins: Biochemical and Cell Biological Aspects*. S. W. Tanenbaum, editor. North-Holland Publishing Co., New York. 143-160.